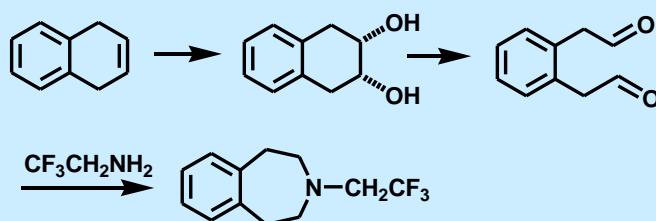


2,2,2-Trifluoroethylamine



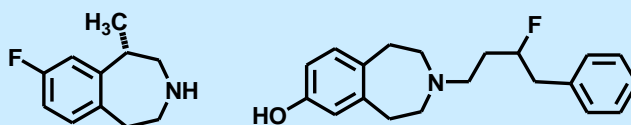
Purity	97%
Catalog Number	1523
CAS Number	753-90-2
MDL Number	MFCD00008132
Molecular Formula	C ₂ H ₄ F ₃ N
Molecular Weight	99.05

A novel basic synthetic method for benzazepine skeletons with trifluoroethyl groups. Oxidative ring-opening of dihydronaphthalenes to diols and dialdehydes and ring-closing with fluoroalkylamines.



Application

Other analogues of Lorcaserin; Selotonin 5-HT_{2C} receptor agonist



J. Fluorine Chemistry, 232, (2020) 109466

Properties:

Appearance	Liquid
Boiling point, °C	37-38
Melting point, °C	-
Flash point, °C	-

Capacity:

-

Packing:

-

UN, PG:

-